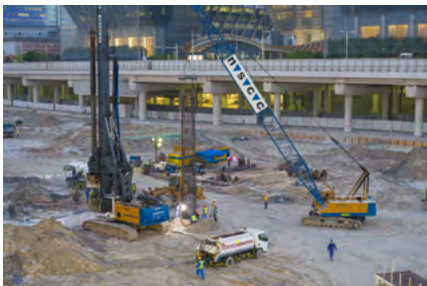


## FOUNDATION ENGINEERING

# Piling Works for Al Maryah Central

## Superplot CP-A, Al Maryah Island

LUXURY • RETAIL • HOSPITALITY & LEISURE • ROTARY BORED PILES



### Client

Gulf Related Sowwah Retail Ltd

### Consultant

AECOM

### Main Contractor

NSCC International

### Location

Abu Dhabi, UAE

### Start Date

May 2015

### Completion Date

October 2015

### Project Details

#### Main Piles

1000 mm dia., 212 nos., depth ranging from 12.0 - 17.0 m

1200 mm dia., 376 nos., depth ranging from 13.0 - 20.0 m

1500 mm dia., 310 nos., depth ranging from 18.0 - 23.6 m

Total length drilled : 17,850 LM

Static pile load tests : 9 nos.

Non working load tests : 9 nos.

Integrity tests : 898 nos.

Calliper logging tests : 119 nos.

Sonic coring tests : 99 nos.

Concrete volume : 28,000 m<sup>3</sup>

Reinforcement steel : 1,850 tons

This dynamic, US \$1.5 billion, 3.1 million sqf Al Maryah Central development, due for completion in Q1 2018, will include a 2.3 million sqf shopping center housing the region's first Macy's and Abu Dhabi first Bloomingdale's Department Stores. The development will also feature two, 400,000 sqf integrated towers comprising a mix of hotel, serviced and residential apartments and luxury residences.