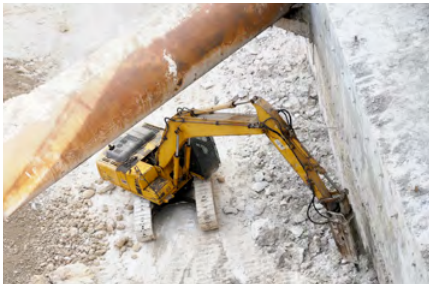


## FOUNDATION ENGINEERING

# National Bank of Abu Dhabi Building at Capital Centre (ADNEC)

COMMERCIAL - OFFICES • DIAPHRAGM WALLS • STRUTTING • DEEP EXCAVATION



### Client

National Bank of Abu Dhabi (NBAD)

### Consultant

Architecture & Planning Group (APG)

### Main Contractor

NSCC International

### Location

Abu Dhabi, UAE

### Start Date

17 October 2009

### Completion Date

20 February 2010

### Project Details

Type of Work	: Diaphragm Wall
D-Wall Length	: 191 m, 1,000 mm thick
Retained Height at Excavation	: 16.2 m
Shoring Depth	: 21.2 m
Concrete Volume	: 4,000 m <sup>3</sup>
Reinforcement Steel	: 575 tons
Excavation	: 35,000 m <sup>3</sup>

