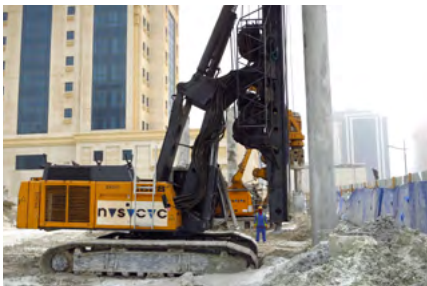


FOUNDATION ENGINEERING

Fraser Suites West Bay Doha

Luxury Residential Skyscraper

RESIDENTIAL • SECANT PILED WALLS • GROUND ANCHORS • ROTARY BORED PILES • STRUTTING • DEEP EXCAVATION



Client

Al Sarh Properties

Consultant

Arab Engineering Bureau

Main Contractor

NSCC International

Location

Doha, Qatar

Start Date

January 2012

Completion Date

October 2012

Project Details

Secant pile shoring	: 332 LM
Excavation & disposal	: 85,576 m ³
1500 mm dia. piles	: 128 nos.
1200 mm dia. piles	: 24 nos.
900 mm dia. piles	: 24 nos.
750 mm dia. piles	: 106 nos.
Dewatering works	

Fraser Suites is a 46 level, high-rise tower (3B + G + M + 46F), developed by Rabban Hospitality. The tower, designed in the Art-Deco style, houses 396 Gold-Standard serviced apartments.

