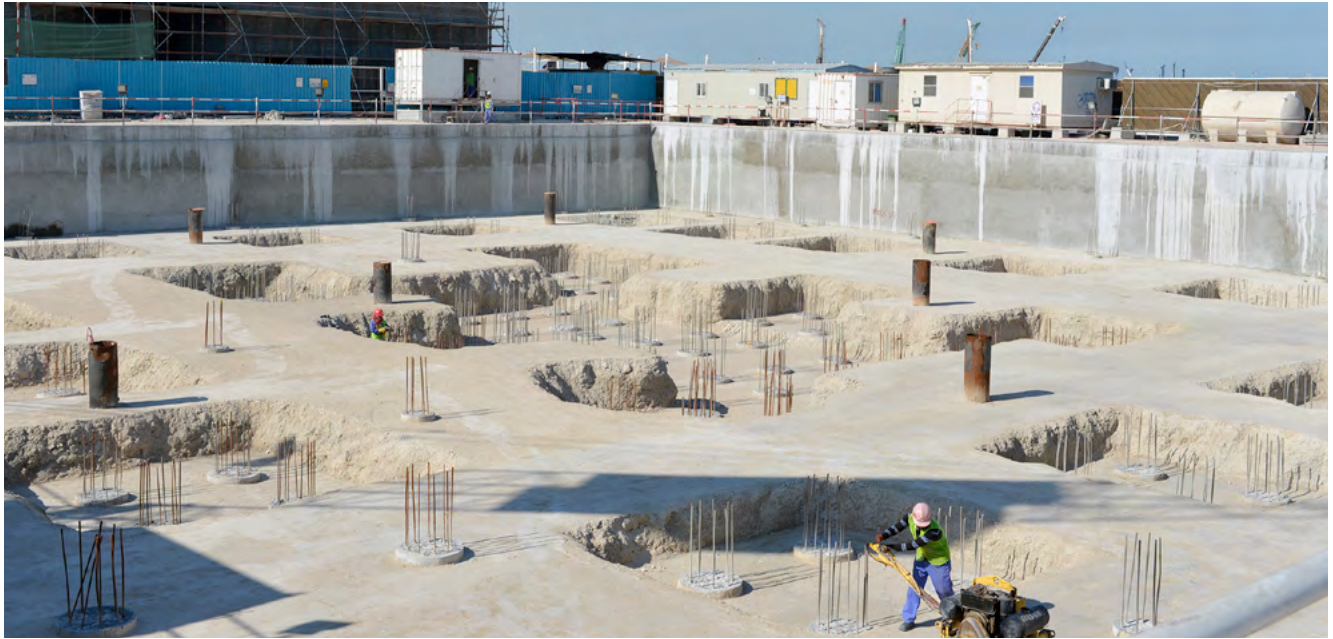


FOUNDATION ENGINEERING

Marina Mix Commercial Building

Plot No. 052 (B+G+7P+13 Floors), Lusail Marina District

COMMERCIAL • CONTIGUOUS PILED WALLS • ROTARY BORED PILES



Client

Mr Abdullah Bin Fahad G. Al Marri

Consultant

Mimar Consult

Main Contractor

NSCC International

Location

Doha, Qatar

Start Date

November 2013

Completion Date

April 2014

Project Details

Main Piles

600 mm dia. piles : 52 nos., to a depth of 12 m
800 mm dia. piles : 123 nos., to a depth of 18 m
Working piles : 175 nos.
Total length drilled : 2271.92 LM

Contiguous Piled Wall

Perimeter : 220 m
Retained Depth : 5 m
Shoring piles : 333 nos.
Pile details : 600mm dia. @ 650mm c/c, 10m long

Excavation volume : 16,576 m³

Concrete volume : 2,230 m³

Reinforcement steel : 170 tons