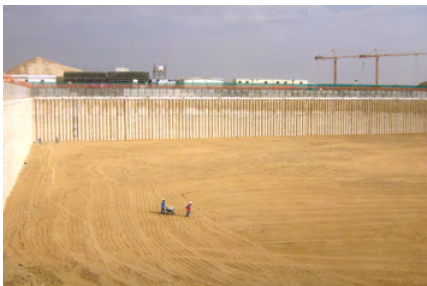


FOUNDATION ENGINEERING

Arena Mall at Dubai Sports City

HOSPITALITY & LEISURE • RETAIL • CONTIGUOUS PILED WALLS • EXCAVATION



Client

Dubai Sports City

Consultant

Dewan Al Amara Architects & Engineers

Main Contractor

NSCC International

Location

Dubai, UAE

Start Date

24 August 2008

Completion Date

21 March 2009

Project Details

Contiguous Piles : 750 mm dia., 800 mm spacing
Excavation Depth : 9.35 m
Shoring Depth : 15.7 m
No. of Piles : 397 nos.
Length of Shoring : 317.59 m

Contiguous Piles : 900 mm dia., 950 mm spacing
(with one row of anchors)
Excavation Depth : 15.15 m
Shoring Depth : 15.7 m
No. of Anchors : 260 nos.
No. of Piles : 775 nos.
Length of Shoring : 693.287 m

Reinforcement Steel : 1,258 tons
Concrete Volume : 11,492 m³
Total Length Drilled : 19,404 LM