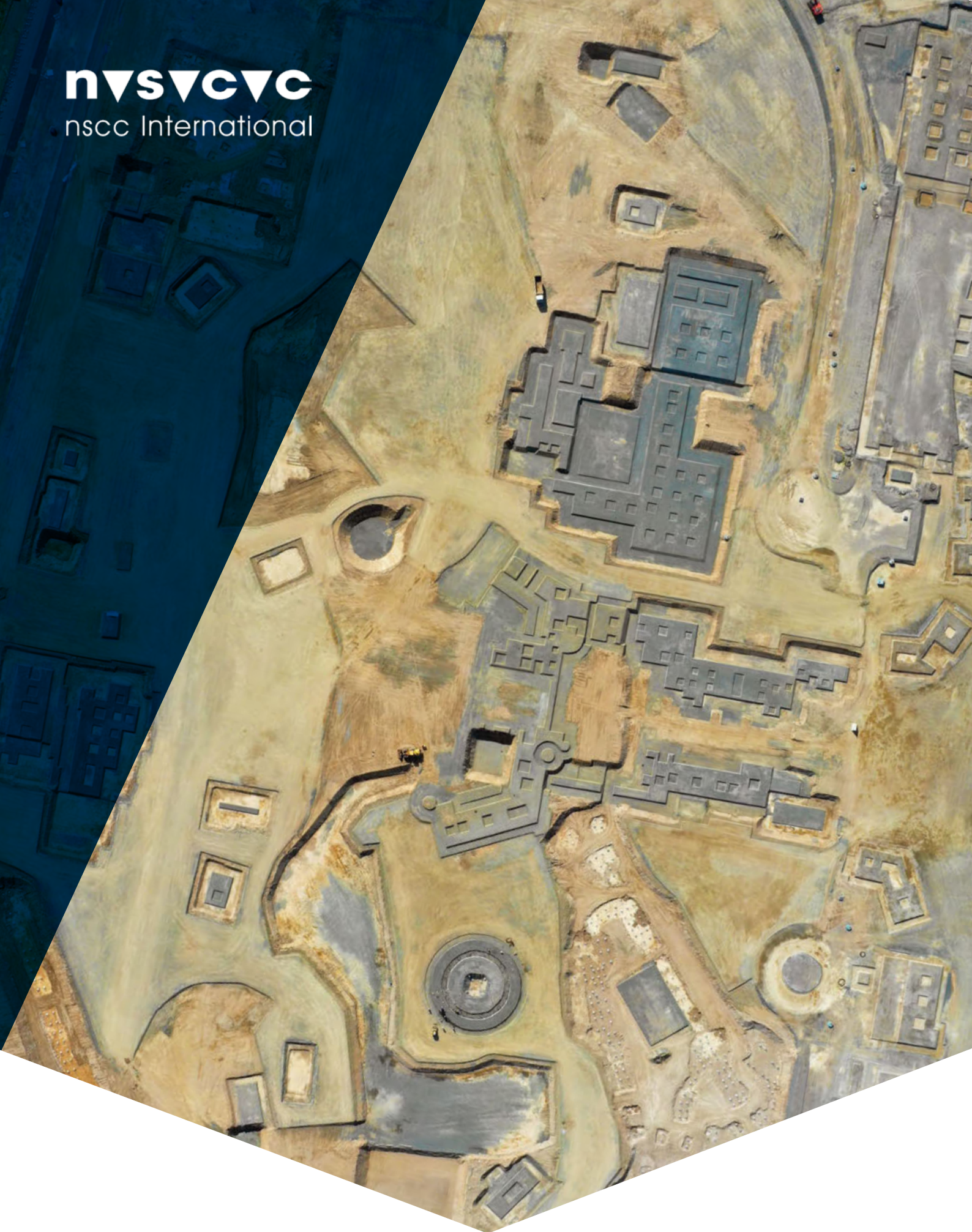


**n▼s▼c▼c**  
nssc International



**Your Total Ground Engineering Partner**



## Our Vision and Mission

To establish a premier brand known for excellence in specialised engineering and construction while capitalising on the synergy of our diversified portfolio.

To be the premier provider of diverse specialised engineering services with an expansive regional focus.

# Welcome to NSCC International



Formed in 1968, NSCC International's innovation, integrity and enterprise has been integral to the very foundations of the modern Middle East. We are proud to have worked on countless iconic projects such as Abu Dhabi International Airport Midfield Terminal Complex, Amaala Triple Bay, Doha Metro, Etihad Museum, Neom - The Line, Palm Jumeirah and Sheikh Zayed National Museum.

With over 58 years of experience behind it, NSCC has grown from a marine contractor into a multi-disciplined organisation. Generations of experience is backed by a highly motivated and ambitious workforce eager to put their stamp on the Middle East of tomorrow.

Decades of delivering on-time and within budget has cemented our reputation as a premier service provider. Such efficiency has only been possible with constant investment in the most sophisticated machinery and techniques. Operating on the cutting-edge has and will spur growth and ensure NSCC's position at the top of our industry.

# Our Core Values

## Leadership and Differentiation

To exhibit leadership to shareholders, employees, customers and suppliers by continued focus on differentiation in the NSCC product and service offerings, and a commitment to individual employee development.

## Trust and Partnership

Honour commitments to clients, staff and shareholders in order to maintain integrity and transparency, allowing NSCC to establish long-term partnerships and build a strong client base.

## Growth and Opportunity

To capitalise on the company's successes by continually pushing the boundaries to improve NSCC services, while driving forward with expansion into new regions wherever feasible.

## Empowerment and Dynamism

To foster a dynamic environment of growth and challenge by empowering NSCC employees and rewarding good and sensible business decisions in a manner consistent with best practices and proper business process.



Ain Sokhna, Egypt

# Our Solutions



The Address Residence Skyview, Dubai

**NSCC is the provider of turn-key foundation engineering solutions, with expertise across a variety of essential disciplines.**

**As the first company in the region to introduce two of the industry's most popular techniques, piled foundations and horizontal directional drilling (HDD), NSCC has consistently been at the forefront of technological and operational advancements.**

The company has a fleet of 100 per cent NSCC owned equipment, a team of highly skilled engineers and project managers, as well as a wealth of combined experience from the management team.

## **Design & Value Engineering**

NSCC provides a perfect blend of design coupled with a long tradition of construction expertise in the fields of ground engineering and marine works. We possess the necessary modelling skills and know-how to analyse complex geotechnical and structural engineering problems on behalf of our clients.

Our design department appreciate the art of value engineering and produce designs by systematically following a multi-stage project plan while keeping in mind the ultimate objective of safe and cost effective design criteria.

Value engineering's potential is greatest when the process begins in the pre-design stage. We involve our Client directly and encourage their participation with the project team. Based on the Client's input, the team then goes to work, continually hypothesising, testing and implementing the multiple facets of value delivery until an optimised solution is found.

# Foundation Engineering



NEOM - The Line, Saudi Arabia

Working in tandem with the in-house design team, NSCC operations provide complete solutions for foundation engineering works in the commercial, residential, marine and industrial civil engineering sectors.

NSCC's land based foundation engineering techniques incorporate:

## ► Piled Foundations

- Rotary bored piles
- Continuous flight auger (CFA) piles
- Driven piles
- Micropiles
- Barrettes

## ► Earth Retaining Structures

- Contiguous piled walls
- Secant piled walls
- Diaphragm walls
- Ground anchors
- Strutting systems

## CLIENTS INCLUDE:

Abu Dhabi Crown Prince Court  
Abu Dhabi Tourism & Culture Authority  
Aldar Properties  
Al-Fardan Properties  
Amaala Company  
Emaar Properties  
Meydan Group  
Miral Asset Management  
Modon  
Nakheel  
Neom  
Qatar Rail  
Roads Transport Authority (RTA) Dubai  
Tourism Development & Investment Company  
Wasl Asset Management Group

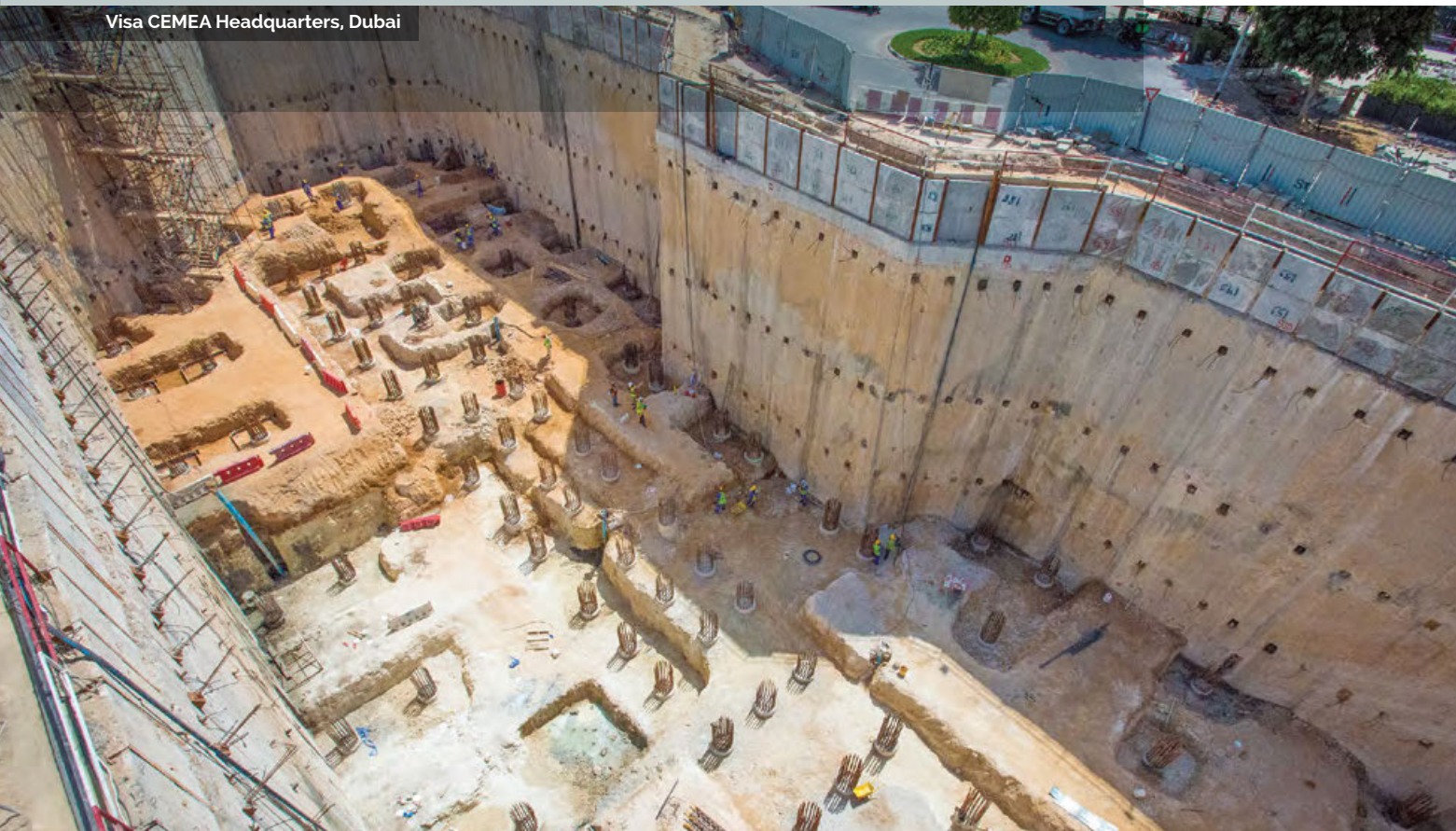
**NSCC's piles and large watertight retaining walls have formed the foundations of some of the most important landmarks in the region, using the latest techniques to successfully complete even the most challenging of projects.**

**MAJOR PROJECTS INCLUDE:**

- Historically and culturally iconic projects such as Etihad Museum, Qatar National Museum, Zayed National Museum, and Qasr Al Hosn
- Amaala Triple Bay, and The Line - Neom, in Saudi Arabia
- Abu Dhabi International Airport - Midfield Terminal Complex
- The Address Residence Sky View, Burj Vista, Blvd Crescent and Burj Crown in Downtown Dubai, and several luxury residences at Dubai Creek Harbour
- Major stations along the Doha Metro Green Line
- Al Maryah Central, Burjeel Medical City, Cleveland Clinic, The Regent Emirates Pearl and Bab Al Qasr Hotel in Abu Dhabi
- Lusail Marina Mall, Place Vendome, and the new Kahramaa Headquarters tower in Lusail, Doha
- Palm Jumeirah Golden Mile Residences and Meydan Racecourse, Dubai



Visa CEMEA Headquarters, Dubai



# Ground Improvement



Pearl Jumeira, Dubai



NSCC's ground improvement division carries out all types of in-situ soil improvement works, such as vibro compaction and vibro replacement (stone columns).

With our range of depth vibrators, fully serviced by our in-house workshop facility, we are able to carry out a complete design and installation service.

- ▶ **Vibro Compaction**
- ▶ **Vibro Replacement**  
(Stone columns)
- ▶ **Rigid Inclusions**
- ▶ **Grouting**
  - Jet grouting
  - Tube-a-Manchette grouting
  - Permeation grouting
  - Compaction grouting
  - Chemical grouting



CLIENTS INCLUDE:

- Aldar Properties
- Dubai Electricity & Water Authority (DEWA)
- Dredging International - MEDCO JV
- Farah Leisure Parks Management
- Meraas Properties
- Nakheel
- Special Economic Zone Authority of Duqm (SEZAD)
- Van Oord Gulf

# Marine Works

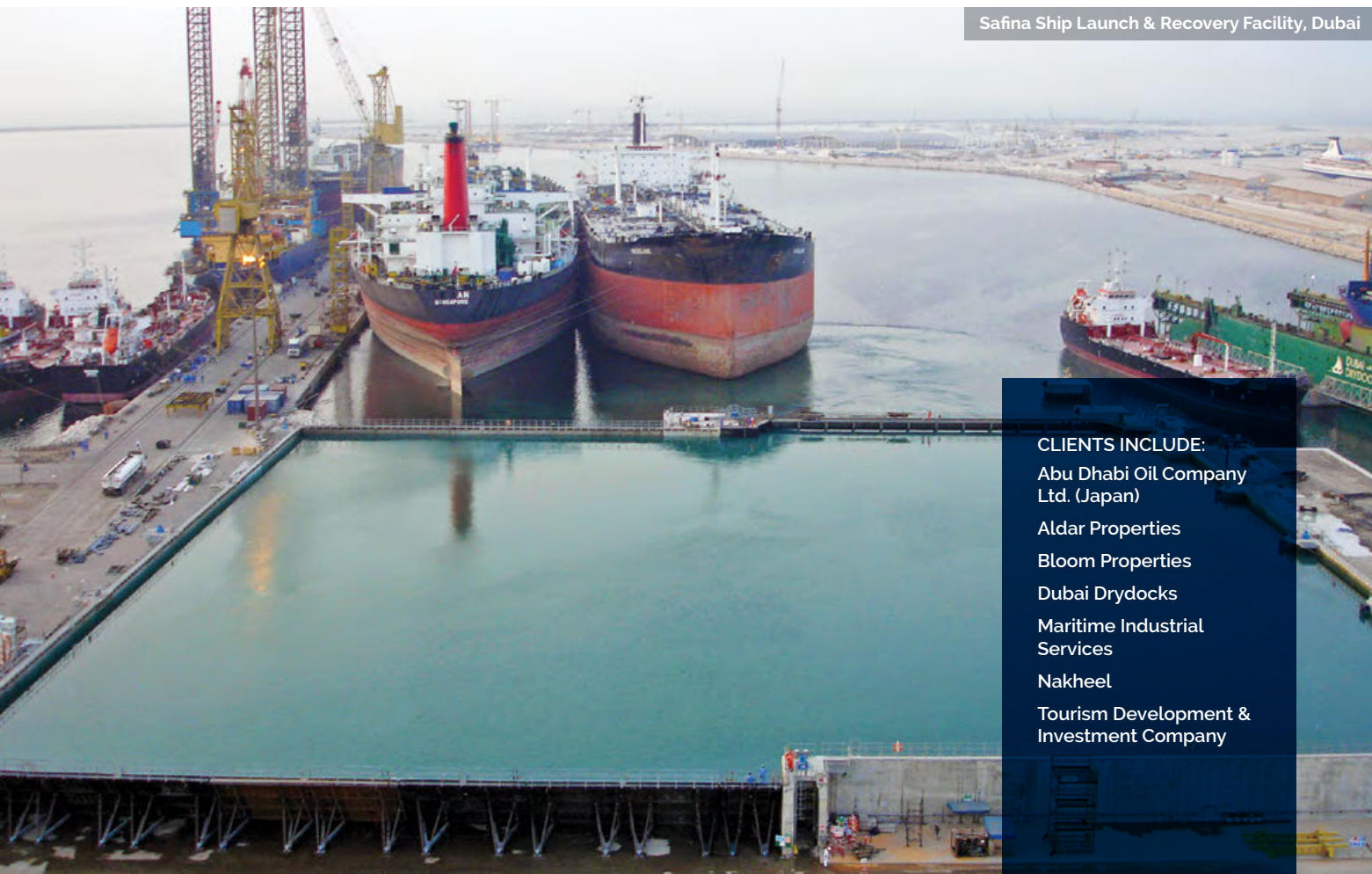
With vast experience of marine piling, NSCC has an impressive track record of projects in this highly specialised line of work.



The NSCC marine division works closely with the foundation engineering team and shared resources, plant and equipment as well as a pool of project managers, engineers and supervisory staff.

NSCC has specialist technical expertise of delivering:

- Jetties
- Quay walls
- Gravity block walls
- Sheet piled walls
- Permanently cased marine piles
- Beach reclamation
- Dolphin structures
- Ship lift basins
- Rock revetments
- Pontoons
- Breakwaters



Safina Ship Launch & Recovery Facility, Dubai

#### CLIENTS INCLUDE:

Abu Dhabi Oil Company Ltd. (Japan)  
Aldar Properties  
Bloom Properties  
Dubai Drydocks  
Maritime Industrial Services  
Nakheel  
Tourism Development & Investment Company

# Horizontal Directional Drilling (HDD)



Bahrain LNG Import Terminal Project

Introduced by NSCC International to the Middle East in 1996, Horizontal Directional Drilling (HDD) has evolved into the preferred method of installation of pipelines underneath roads, highways, shore-to-shore channels, and more complex shore-to-sea approaches.

HDD installations vary in applications, typically serving the telecom, water, electricity, and oil-and-gas industries. It is enthusiastically embraced by contractors and regulators as a potentially low impact and environmentally friendly construction technique.

During the early days of HDD in the UAE, NSCC used this 'new' technology to install hundreds of road crossings for a vast fiber optic cable network project. Thereafter, similar road crossings were carried out for the Sharjah gas network. Today, NSCC specialises in more complex long crossings with specific emphasis on shore approaches requiring marine support. Our state-of-the-art 350-ton pulling capacity drill rigs and supporting ancillary units make up the largest fleet of large diameter drill spreads in the region, and are operated by best-in-class personnel with global experience.

#### CLIENTS INCLUDE:

ADWEA  
Dubai Electricity & Water Authority (DEWA)  
Nakheel  
National Oil & Gas Authority (Nogaholding)  
Saudi Aramco  
Republic of Iraq Ministry of Water Resources  
Shell  
TRANSCO

# International Standards



ISO 9001:2015  
ISO 14001:2015  
ISO 45001:2018  
Management System  
www.tuv.com  
ID 9105066843

The international standards for Quality, Health & Safety and Environmental Management form a unified Integrated Management System within NSCC International, practised across all areas of our work and business.

## Our QHSE Policy

- NSCC International maintains an Integrated Management System and all our business activities are conducted in line with ISO 9001, ISO 14001 and ISO 45001 standards.
- In all aspects of our business, we ensure that our operations and activities are carried out in a manner which prioritises the safety and wellbeing of our employees, subcontractors and the environment.
- We continuously monitor and develop the quality of our services in order to exceed clients' expectations.
- It is our policy to be a progressive organisation, dedicated to continued improvement as we achieve our commitment to quality, cost, schedule and safety.
- The Management's involvement and commitment helps develop employees to reach their full potential, to be competitive, creative, responsible and accountable, through training programmes.
- We ensure all operations are fully compliant with statutory regulations governing the health and safety of employees and the community.
- We recognise that our people are our most important asset and provide them with appropriate health and safety awareness to minimise risk of injury or sickness.
- We provide Personal Protective Equipment (PPE) to employees when necessary, as well as maintain First Aid facilities and training at all work sites, offices and employee housing areas.
- We maintain adequate medical records of employees, and provide them access to quality medical services with proper health insurance coverage.
- In all aspects of our business, we strive to minimise our impact on the environment and ensure efficient use of resources.
- We comply with all relevant environmental legislation and regulations to meet or exceed good environmental practices.
- We incorporate sustainability in our strategic decisions and conduct our business in a manner that balances the environmental and economic needs of the communities in which we operate.
- We strive for a cleaner and greener environment by reducing pollution and waste, and encouraging a "Reduce, Re-use, Recycle" culture in the workplace.
- This policy will be made known to all employees, continuously monitored and reviewed on a regular basis.
- We motivate and enthuse our people to actively involve themselves in the policy, to always seek to improve their actions and influence the people we work with to do the same.



# Green & Sustainable Construction



**Green Construction or Environmental Sustainability refers to the holistic approach that makes the built environment friendly to the natural environment throughout an asset's lifecycle, using environmentally responsible and resource-efficient materials and processes, reducing the negative impacts to the environment, cutting emissions and even adding some benefits. design solution.**

NSCC International is committed to the transition towards net zero in the specialist ground engineering industry by:

- ▶ Researching innovative piling techniques (e.g. energy piles)
- ▶ Optimising concrete & diesel usage
- ▶ Reducing the carbon footprint
- ▶ Creating programme optimisations & savings

As a leader in the use of the Double Rotary drilling technique, which is associated with no wastewater, lower noise and faster production rates than other piling techniques, NSCC can carry out full embodied carbon assessments, using industry recognised calculation methods. We can estimate the GHGs released throughout the overall supply chain and thus calculate the carbon emissions reduction associated with our optimised design solution.

**Green Construction is the Present and the Future.**

# Message from Our CEO



**Since our inception in 1968, our company has embarked on a transformational journey of reinventing ourselves to remain dynamic, relevant and a special place of work for all its staff.**

As a leading contracting company in the Middle East specialising in foundation and ground engineering works, we have been lucky to witness and contribute in the transformation of many modern metropolises in our region. We have laid the foundations of many iconic world class structures over the past five decades in cities like Abu Dhabi, Dubai, Jeddah, Riyadh, Doha, Cairo, Bahrain, Muscat, Basrah, Beirut and Kuwait.

We are committed to maintaining the highest level of quality, service and professionalism to grow our business and offerings in line with new cutting edge techniques overseen by an experienced team of experts and dedicated team of young engineers and support staff from a multitude of nationalities across the globe who find their homes in our region.

We are proud to be one of the very few independent companies that have helped train and nurture many leading engineers in the foundation engineering business across our region. Those who have crossed our path remain our regional brand ambassadors. In the coming decade of rapid economic, technological and socio-political change, we boldly take on the challenges that come with it, addressing new ways of doing business in this age of IoT, AI, clean/smart energy and cybersecurity, while practising CSR-focused management.

In an ever changing globally connected world, we believe that our strength and differentiating attributes have and will always be our pool of dedicated and allegiant human capital base. Our move to the next generation of budding, tech savvy engineers has begun and will transform our company in the coming decade.

Khalil N. Khouri, CEO

# Meet Our Team



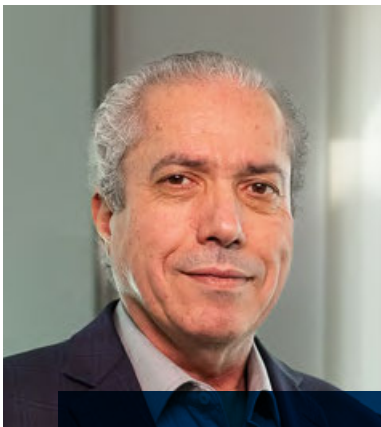
**Khalil N. Khouri**  
Group CEO



**Nidal N. Khoury**  
Vice President



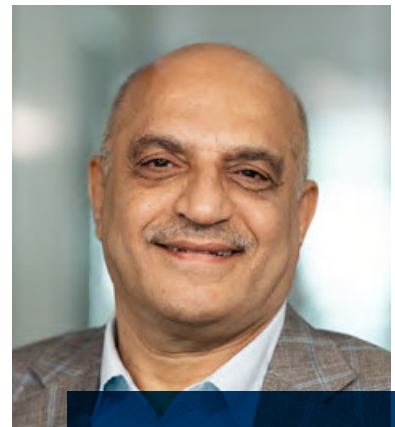
**Issam N. Khoury**  
Group COO



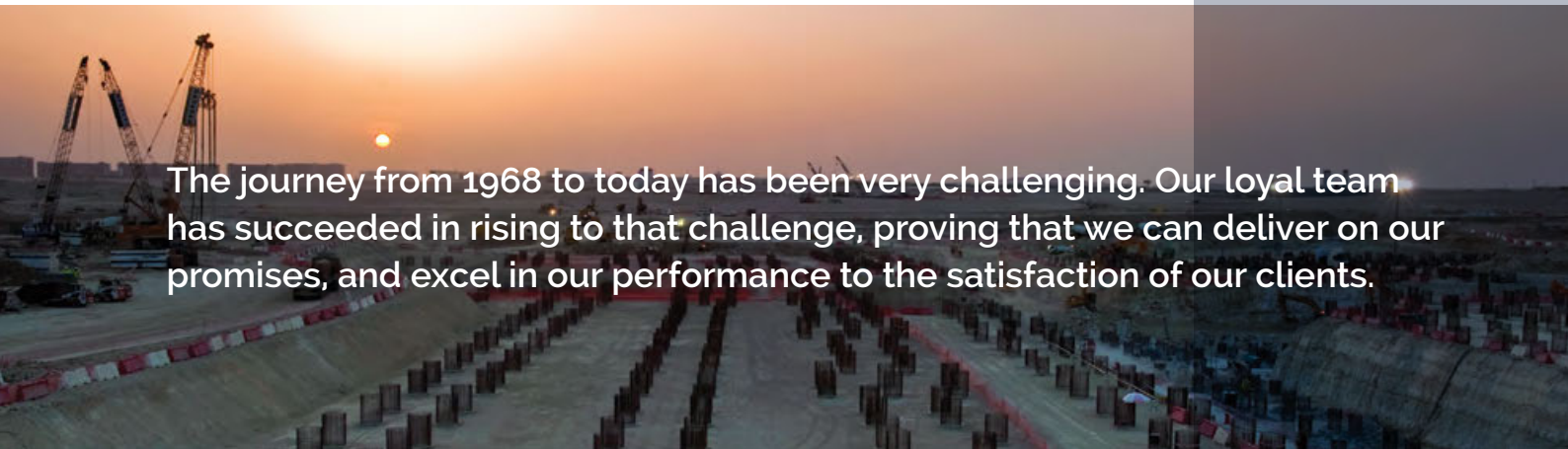
**Khalil Fakhoury**  
Executive Director - Commercial  
& Risk



**Mohammed Al Kaff**  
Executive Director - Project  
Delivery



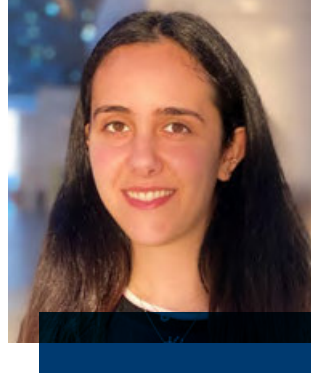
**Hassanin Hashim**  
Regional Director - Iraq

A wide-angle photograph of a large construction site at sunset. The sky is a mix of orange and blue. In the foreground, there are rows of concrete pillars and rebar structures. In the background, several cranes are visible against the horizon.

The journey from 1968 to today has been very challenging. Our loyal team has succeeded in rising to that challenge, proving that we can deliver on our promises, and excel in our performance to the satisfaction of our clients.



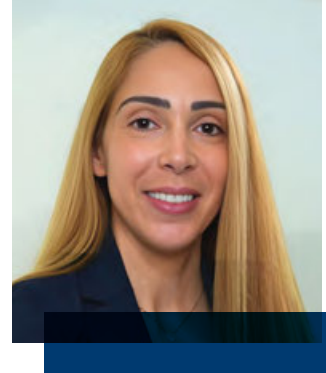
**Amr Hijjawi**  
Group Finance Manager



**Noor K. Khouri**  
Manager - Strategic  
Initiatives & Product  
Development



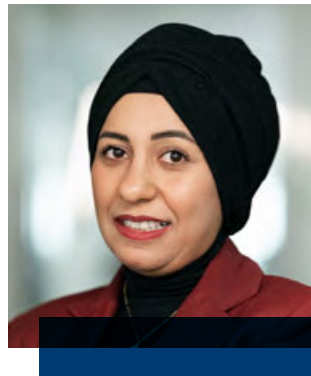
**Youssef Abou Haka**  
Director - Infrastructure  
Division



**Siba Al Saleh**  
Human Capital Department  
Manager



**Hani Mousa**  
Senior Procurement  
Manager



**Ghina Faour**  
Geotechnical Design  
Department Manager



**Rochell Santos**  
Tendering Department  
Manager



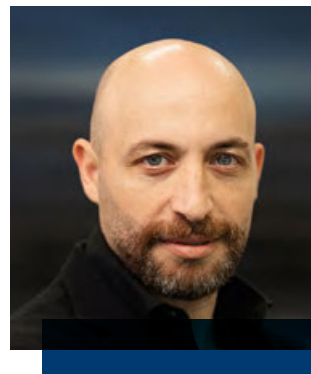
**Tarek Ibrahim**  
Group Plant Manager



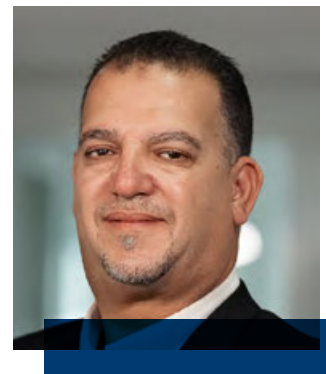
**Hazem Nour**  
Area Manager



**Rami Jabour**  
Area Manager



**Tammam Chacra**  
Area Manager



**Mustafa Derouiche**  
Regional HSSE Manager

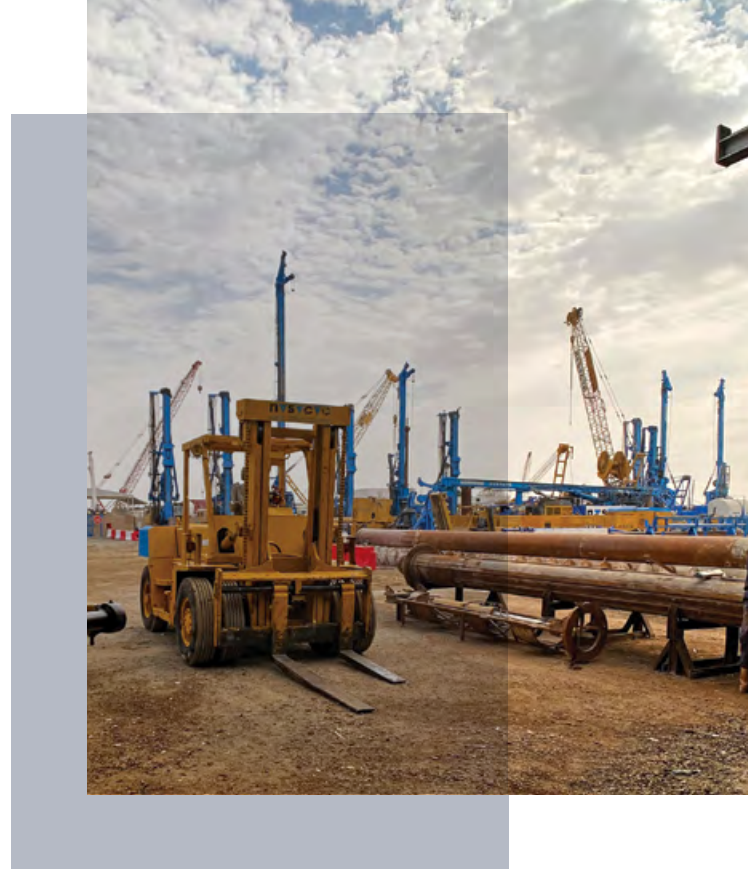
# Our Plant Powerhouse

NSCC employs a sophisticated fleet of equipment consisting modern Bauer, Liebherr & XCMG drilling rigs and diaphragm wall cutters, complemented by a wide variety of ancillary equipment and an expert maintenance team.

With deep drilling capability down to 115 metres, NSCC owns and operates a fleet of more than 30 drill rigs with capacities of up to 60 ton.m torque, 5 diaphragm wall cutters and grabs capable of reaching 110m in depth, and 3 Maxi HDD rigs of 250-ton pulling capacity, along with other ancillary plant and equipment, including but not limited to anchor rigs and service cranes from 50-ton to 150-ton capacities.

We have a highly experienced team of dedicated mechanical and electrical engineers, and a strong team of support staff that keep the machines running efficiently. To help maintain our fleet in first class working condition, we manage large facilities in Abu Dhabi – UAE where the central depot and warehouses are situated, and in Yanbu – KSA which serves our growing presence and commitment to our Saudi operations which mostly function on a round-the-clock basis.

Our central store maintains a significant stock of spare parts and consumables that are managed by a sophisticated warehouse management software linking both facilities. The central depot also houses our in-house fabrication facility that designs and manufactures a large number of high quality drilling tools, kelly bars, tanks, mixing units, to name a few. Our in-house capability to produce such accessories forms part and parcel of our site productivity and reputation for operational excellence.



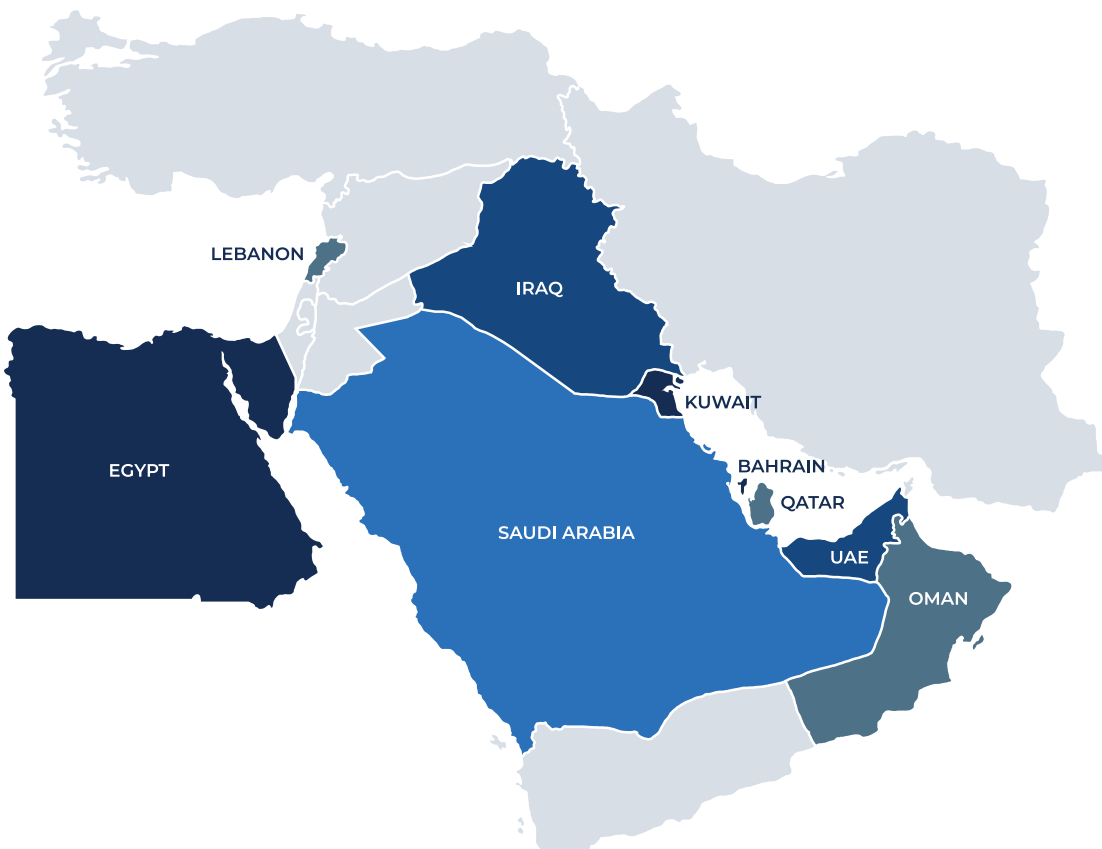
# Strategy for Growth

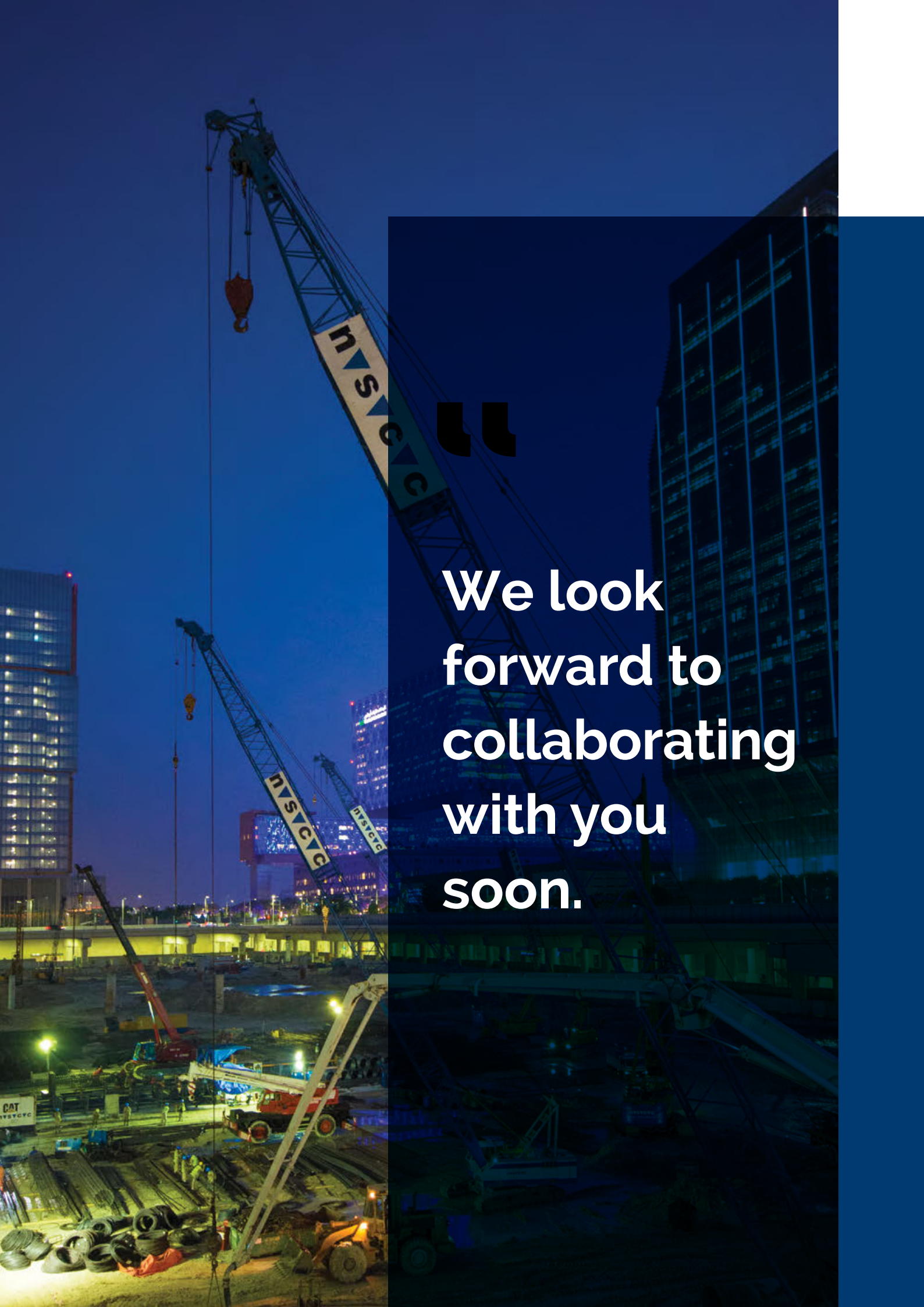
NSCC International has seen significant expansion over the last five decades, evolving to become a regional leader in the design and construction of foundation engineering solutions to the various sectors of the construction industry.



Over the last 15 years, NSCC has opened offices and depots in the GCC and the wider Middle East region, tapping into a growing need for innovative construction solutions in these countries. NSCC is also capitalising on this success by expanding into other exciting new growth regions across the world.

The company's growing global structure allows it to be competitive, support the local economy, and provide employment in the area. NSCC can change the face of the new cities of the world, as it improves its infrastructure. There is a constant need to adapt to new situations, resulting in a need for NSCC structures and procedures to advance as well, in order to keep pace with the new demands; it is this consistent evolution that ensures NSCC International is at the forefront of the industry.





“

We look forward to collaborating with you soon.

# Our Locations

## **ABU DHABI, UAE**

NSCC International L.L.C. - S.P.C.  
Tel: +971 2 697 7000 Fax: +971 2 697 7111  
Email: info@nscme.com

## **Plant Department**

Tel: +971 2 551 0013 Fax: +971 2 551 3292  
Email: plant@nscme.com

## **DUBAI, UAE**

NSCC International L.L.C.  
Tel: +971 4 406 0000 Fax: +971 4 406 0006  
Email: dubai@nscme.com

## **RAS AL KHAIMAH, UAE**

NSCC International FZ-LLC  
Tel: +971 7 207 8093  
Email: rak@nscme.com

## **DOHA, QATAR**

NSCC International Doha L.L.C.  
Tel: +974 4435 0801 Fax: +974 4435 0802  
Email: qatar@nscme.com

## **MANAMA, BAHRAIN**

NSCC International Limited Bahrain W.L.L.  
Tel: +973 1757 4363 Fax: +973 1753 2259  
Email: bahrain@nscme.com

## **BEIRUT, LEBANON**

NSCC International Liban S.A.L.  
Email: lebanon@nscme.com

## **RIYADH, SAUDI ARABIA**

NSCC International Saudi Contracting  
Tel: +966 11 512 2640 Fax: +966 11 276 6837  
Email: ksa@nscme.com

## **BASRAH, IRAQ**

NSCC International Limited  
Email: iraq@nscme.com

## **CAIRO, EGYPT**

NSCC International for Construction  
Tel: +20 2 3824 0825 Fax: +20 2 3824 0690  
Email: cairo@nscme.com

## **MUSCAT, OMAN**

NSCC International LLC  
Tel: +968 2 495 7100 / 21 Fax: +968 2 495 7101  
Email: oman@nscme.com



**n▼s▼c▼c**  
nsc International

[www.nscme.com](http://www.nscme.com)

